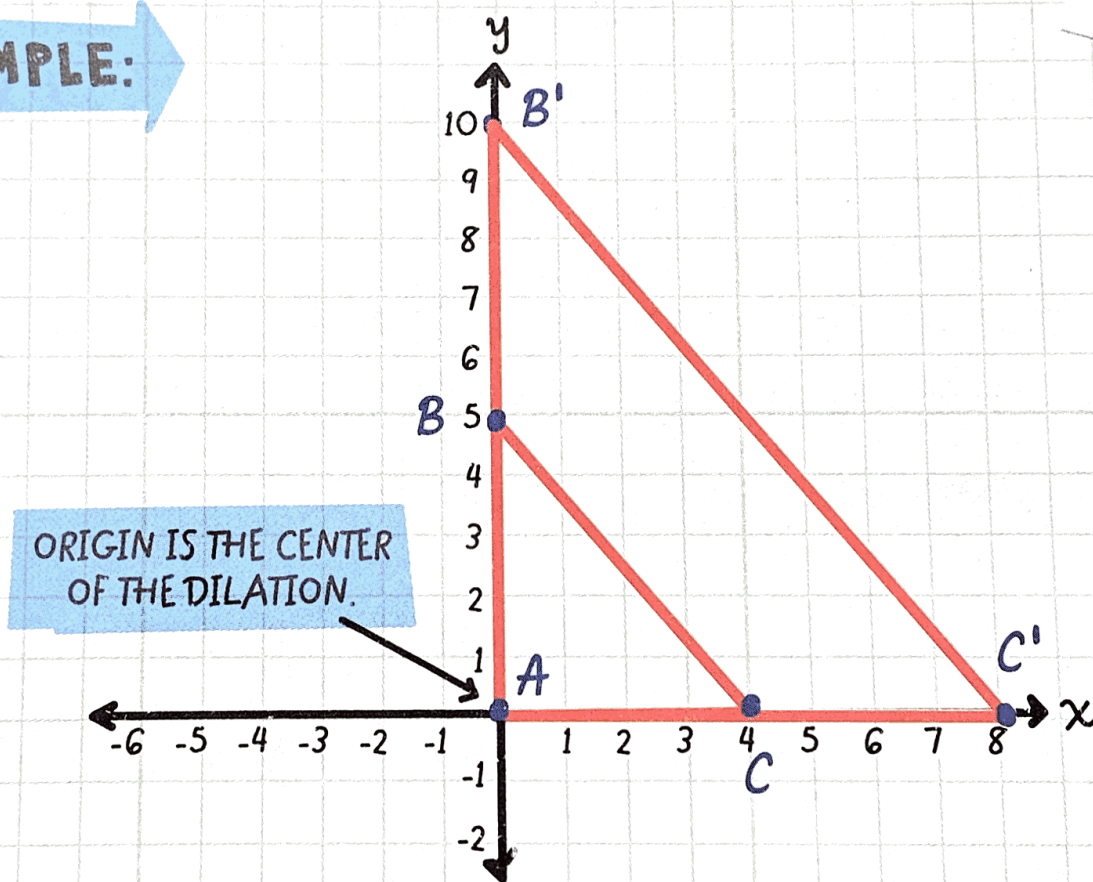


DILATION

A **DILATION** is a transformation that enlarges or reduces a figure by a **SCALE FACTOR**. The scale factor is the amount by which you stretch or shrink the original figure. When you change the size of a figure, there is a **CENTER OF DILATION**, which is the fixed point in the coordinate plane around which the figure expands or contracts.

EXAMPLE:



In the above figure ABC , side AB has a length of 5 units and side AC has a length of 4 units. If ABC is enlarged by a scale factor of 2 to make $AB'C'$, side AB' has a length of 10 units and side AC' has a length of 8 units.